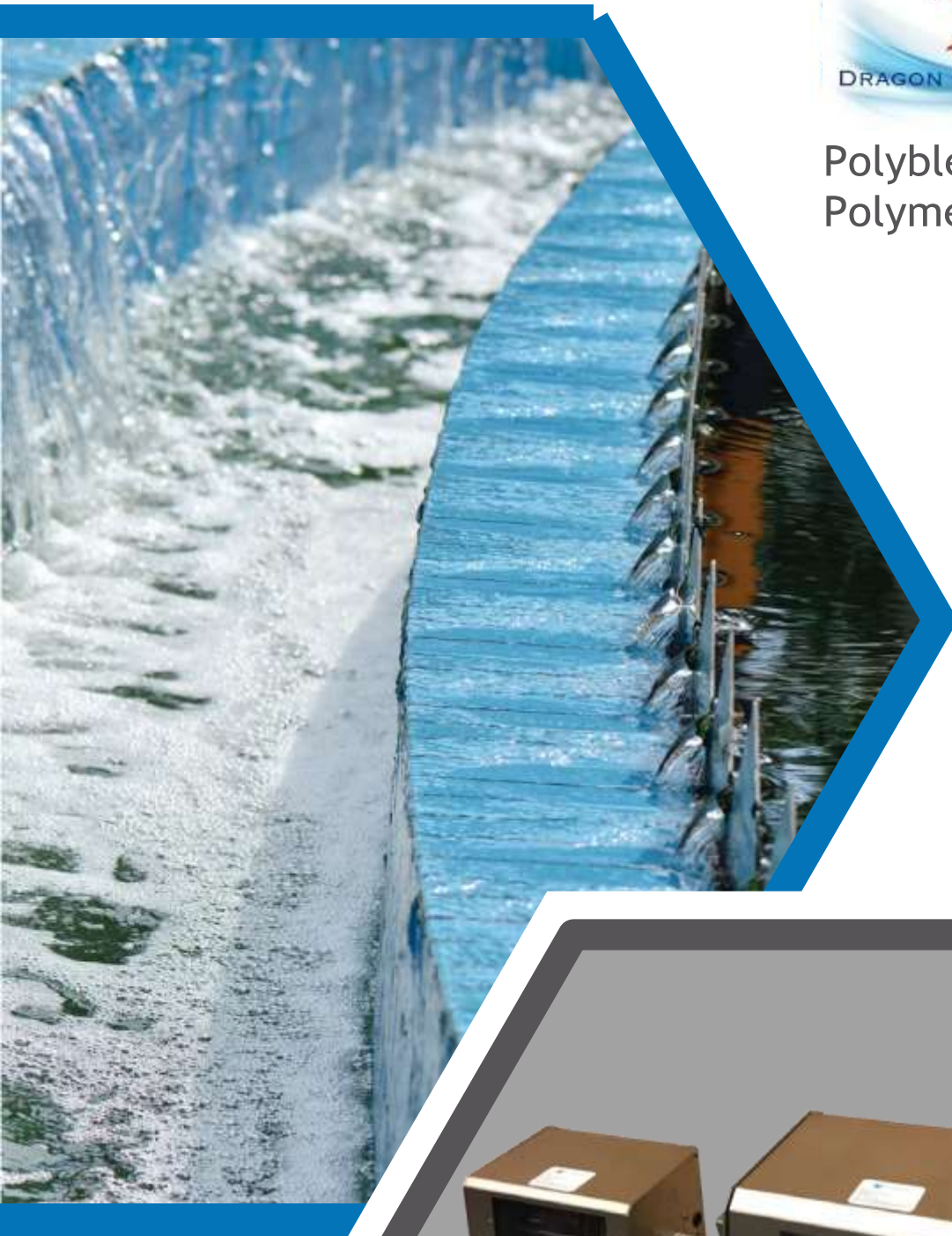




Polyblend HMZ Liquid Polymer Feed



Introduction

The PolyBlend® systems are automated polymer feed systems for precise control and economic performance of liquid grade polymers.

Polyelectrolytes require specifically designed energy regimes during preparation to attain the correct physio-chemical state in solution to perform the tasks they were designed for.

That's why the PolyBlend® automated polymer feed systems provide precise, programmable control of dosing rate, dilution levels, retention time and energy. With this exclusive control of these process variables you can be sure your polymers have the ideal mixing environment. That means you get the maximum yield efficiency from any polymer.

PolyBlend Systems

The PolyBlend® system has proven itself superior and more economical than other systems, including batch mixing, static mixer combinations and centrifugal pumps. That demonstrated superiority in yield comparisons has made PolyBlend® systems the preferred choice worldwide for polymer activation.

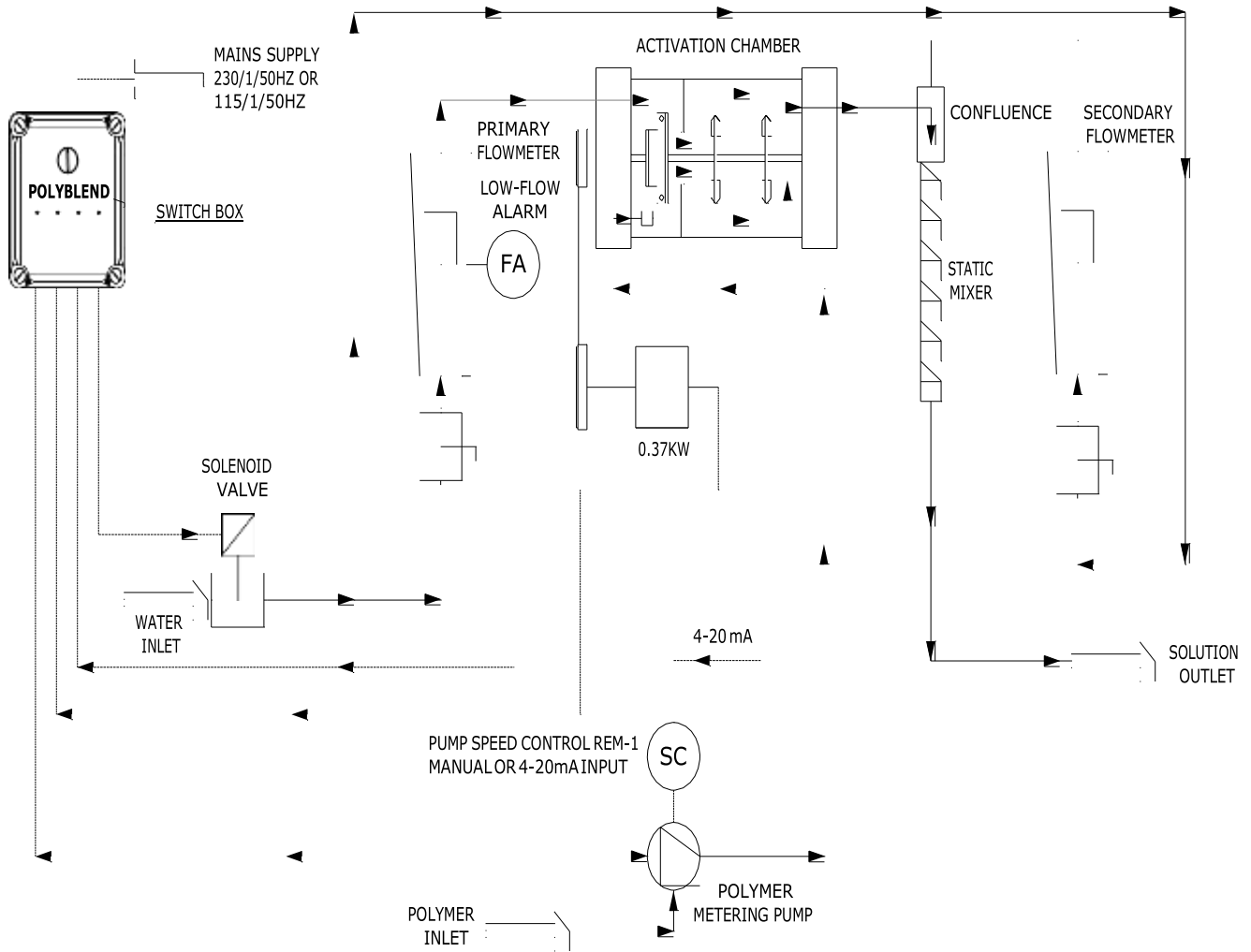
PolyBlend® systems achieve this unequalled performance with a simple and reliable ongoing technology from in-house corporate R & D technology that provides consistently uniform and repeatable results.

Best of all, you achieve these results with totally automated operation, giving you the right polymer activation for optimum coagulation and flocculation, every time. Other benefits are its versatility, portability, compactness, resilience and ease of installation and operation.

- High capacity mixing chamber
- The unique multi-zone activation chamber is designed to give energy values appropriate to the swelling and hydration needs of the chemical through this operation
- Flow sensors, variable set-points for low water protection, auto restart
- Fast and easy service of valve assemblies without disturbing the suction and discharge piping
- Choice of configurations—Simplex / Duplex / Double simplex to suit the complexity of the application / site layout restrictions
- Electrical: 110 V AC or 220/230 V AC / 1 pH / 50 Hz
- Maximum water pressure: 5 bar
- Mixer motor: 0.37 KW, TEFC
- Single phase continuous duty
- Remote Proportional Control via 4-20mA signal or manual control



PolyBlend PB 200 & 1000 Series Flow Schematic



| PolyBlend System Model No. | Dilution Water Flow l/h | | Neat Polymer Feed Max l/h |
|----------------------------|-------------------------|-----------|---------------------------|
| | Primary | Secondary | |
| PB 16 - 1 | 5 - 60 | | 3.7 |
| PB 100 - 1 | 50 - 375 | | 3.7 |
| PB 100 - 2 | 50 - 375 | | 7.5 |
| *PB 200 - 1 | 50 - 375 | 0 - 500 | 3.7 |
| *PB 200 - 2 | 50 - 375 | 0 - 500 | 7.5 |
| PB 600 - 2 | 0 - 2400 | | 7.5 |
| PB 600 - 4.5 | 0 - 2400 | | 17 |
| *PB 1000 - 2 | 0 - 2400 | 0 - 2400 | 7.5 |
| *PB 1000 - 4.5 | 0 - 2400 | 0 - 2400 | 17 |

*These models internally incorporate the secondary dilution system

8 7 6 5 4 3 2 1

F F

E E

FINAL SOLUTION OUTLET
3/4" BSPF / 25mm
HOSETAIL

PRIMARY
DILUTION
FLOWMETER

REM_1D POLYMER
DOSING PUMP CONTROL

MAIN SWITCH BOX

SECONDARY
DILUTION
FLOWMETER

STATIC MIXER ASSY.
(SECONDARY DILUTION)

D D

C C

545
65
400

WATER INLET
1/2" BSPF /
20mm
HOSETAIL

POLYMER
DOSING PUMP

WATER
SOLENOID
VALVE

CHAMBER DRIVE
MOTOR (0.37KW)

B B

90 150

POLYMER INLET
15MM HOSETAIL

465

440

A A

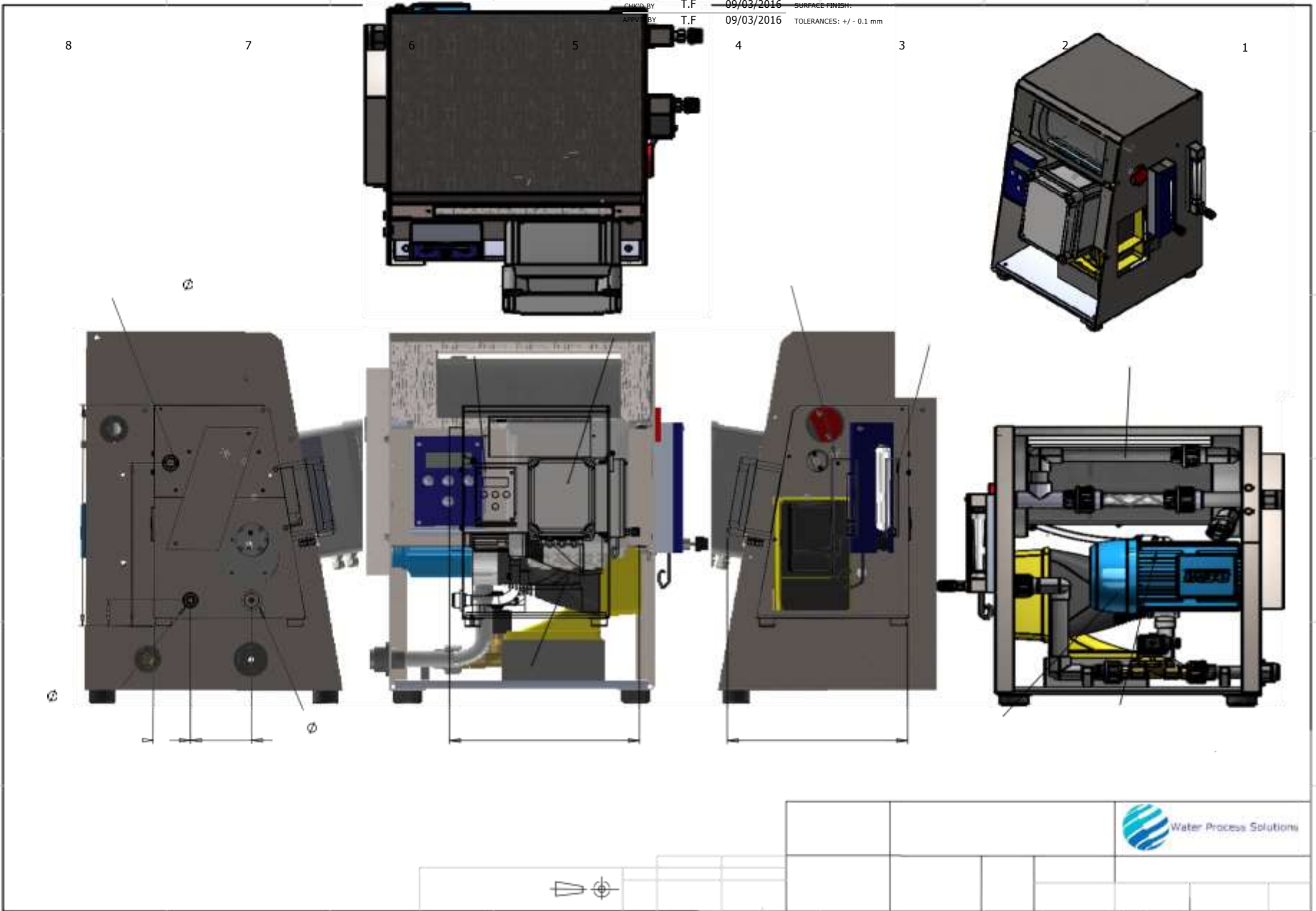
PART NO.
PB-200 SERIES
TITLE:
GENERAL ARRANGEMENT
DRAWING - SFPOLYBLEND

NAME **DATE** **UNLESS OTHERWISE SPECIFIED:** **MATERIAL:** **ISS NO.** **PROJECT NO.**

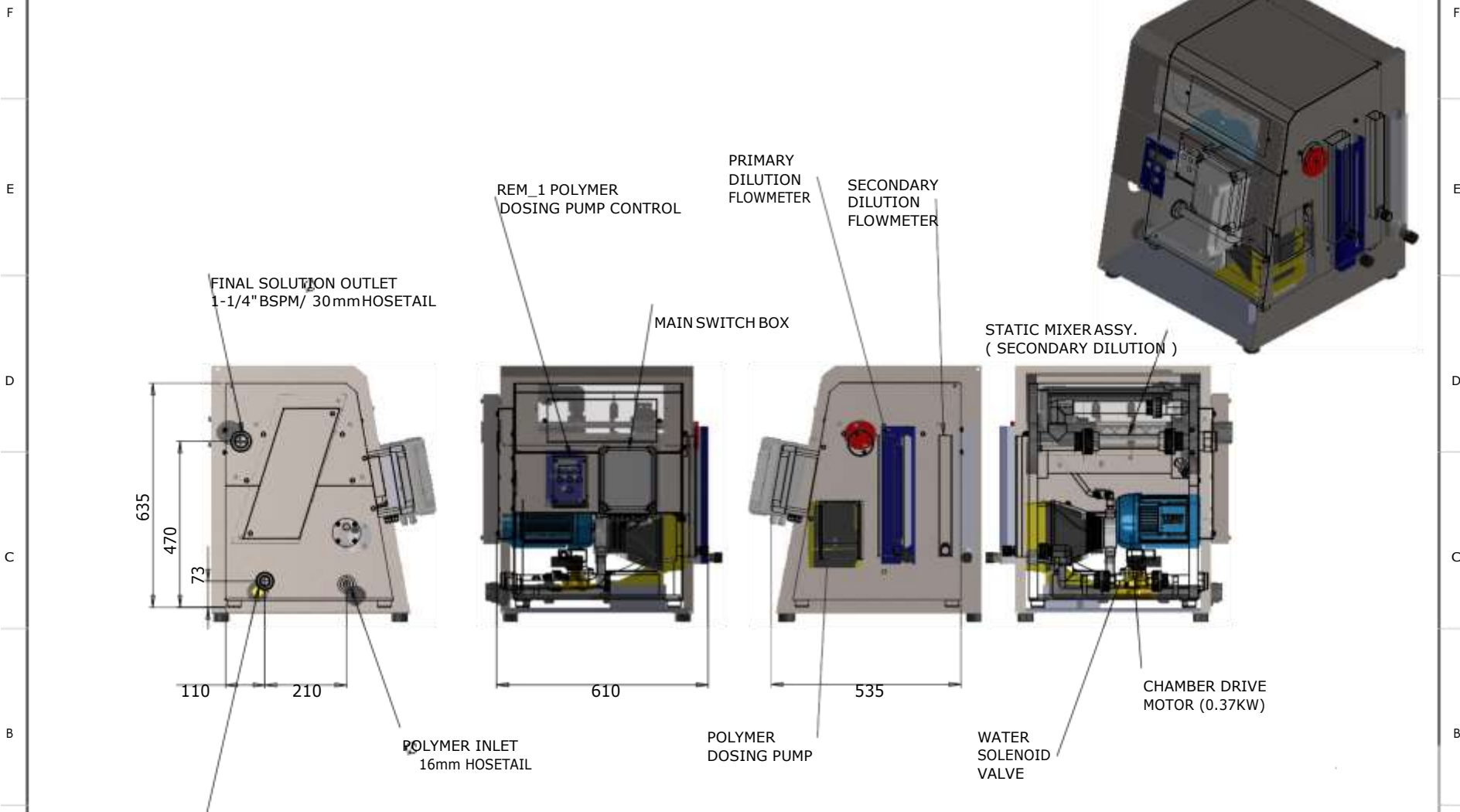
DRAWN BY J.W **09/03/2016** **DIMENSIONS:** ALL IN MM.

THIRD ANGLE PROJECTION

WEIGHT: 01 **SCALE:** 1 / 8 **DWG No. SK384**
REVISION DATE: 09/03/2016 SHEET 1 OF 1 A3



8 7 6 5 4 3 2 1



| | | | | | |
|--|--|---|--|-------------|---------------|
| | PART NO. PB 600 to 1000 SERIES | TITLE: GENERAL ARRANGEMENT DRAWING - LF POLYBLEND | | PROJECT NO. | |
| | | | | ISS NO. 01 | SCALE: 1 / 10 |

CHK'D BY T.F 27/04/2016 SURFACE FINISH:
APPV'D BY T.F 27/04/2016 TOLERANCES: +/- 0.1 mm

8

7

6

5

4

3

2

1



Dragon Water Technologies comprises a group of highly experienced water treatment professionals. Our personnel have backgrounds with brands and companies such as Wallace & Tiernan, Stranco and Chemfeed, all well-known and trusted within the water industry.

Based in South Wales, UK, our aim is to provide customers with the equipment and support they need for effective and reliable water treatment.

For further information, visit our web site.

www.dragonwatertechnologies.com
sales@dragonwatertechnologies.com

Dragon Water Technologies Ltd
Merlin House,
1 Langstone Business Park,
Newport,
South Wales, NP18 2HJ

